

Wastewater

SP25A Series



Applications

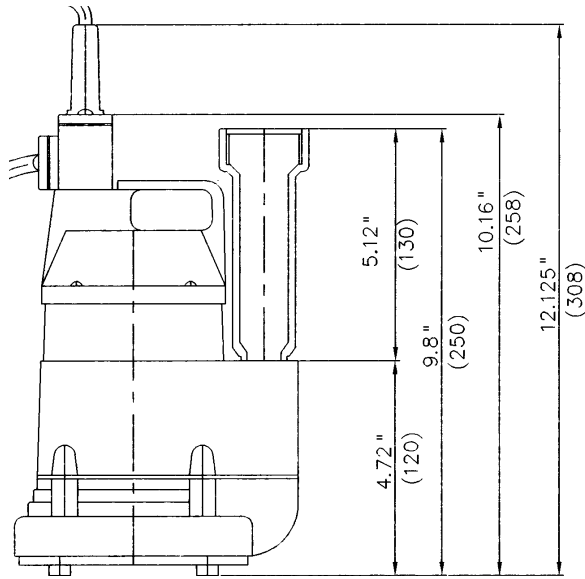
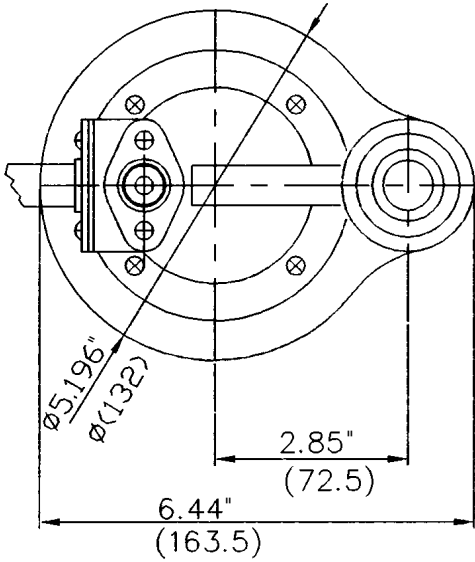
- Automatic utility pump ideal for dewatering and water transfer.

Features

- ¼ hp, 115 Volt, thermal overload protected. 3.2 full load Amps. 10' power cord. Stainless steel heat treated shaft. Continuous duty "oil free" motor. Permanently lubricated lip seal
- Corrosion-resistant aluminum pump casing for superior heat dissipation. 1¼" NPT discharge
- Built-in suction strainer to eliminate internal damage from possible debris. Removable filter screen for easy cleaning
- Impeller constructed of durable glass reinforced thermoplastic
- Automatic, mechanical float switch
 - On Level 13.4" [340mm]
 - Off Level 7.5" [190mm]
- 10' power cord

LittleGIANT®

Engineering Data

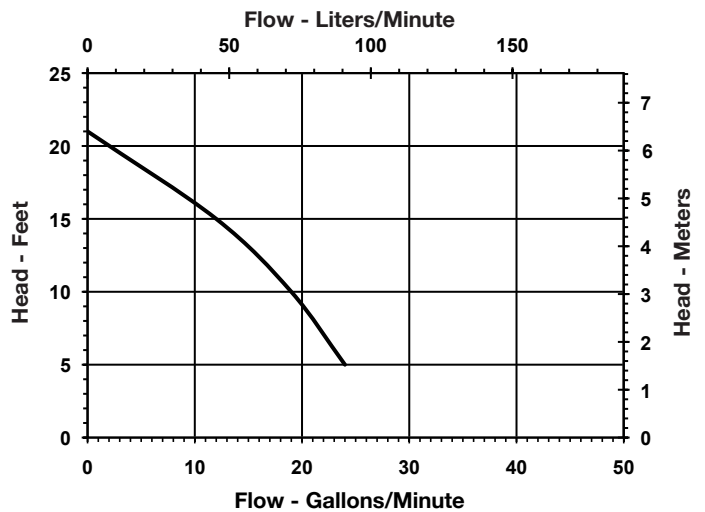


*Dimensions measured in inches [mm]

Specifications

| Item No. | Model No. | Listing | HP | Volts | Discharge | Performance (gpm @ head) | | | Shut-Off Head (ft) | Cord Length (ft) | Ship Wt. (lbs) |
|----------|-----------|---------|-----|-------|-----------|--------------------------|-----|-----|--------------------|------------------|----------------|
| | | | | | | 5' | 10' | 15' | | | |
| 620136 | SP25A | cCSAus | 1/4 | 115 | 1-1/4" | 24 | 19 | 12 | 21 | 10 | 8.5 |

Performance Data



Franklin Electric

P.O. Box 12010
 Oklahoma City, OK 73157-2010
 Phone: 1.800.701.7894
 Fax: 1.800.678.7867
 www.LittleGiantPump.com



©2011 Franklin Electric Co., Inc.
 Little Giant® is a registered trademark of Franklin Electric Co., Inc.
 Form 996166 — 05/11