

LIMITED WARRANTY AND LIMITATION OF LIABILITY

This pump is warranted free from material and/or manufacturing defects for three years from date of purchase (five years on select cast iron pumps). As the sole and exclusive remedy for a breach of this limited warranty, if the product is found to be defective, it will be replaced with an equivalent product if it is returned to the place of purchase with proof of purchase. Any disassembly, modification, or abuse of this product voids this limited warranty. This product is not designed for pumping flammable or corrosive fluids, and use of this product to pump such materials also voids this limited warranty.

**ALL OTHER EXPRESS OR IMPLIED WARRANTIES,
INCLUDING WARRANTIES OF MERCHANTABILITY OR FITNESS
FOR A PARTICULAR PURPOSE ARE DISCLAIMED**

IMPORTANT NOTICE: Some commercial and residential insurance policies extend coverage for damages incurred by product failure. In most cases, you will need to have possession of the product to support your claim. In the case where you need to retain possession of the product to support a damage claim you submit to your insurance company, the pump will be exchanged with and equivalent or the original price will be refunded once the claim is settled with the insurer.



OWNER'S MANUAL

INSTALLATION AND OPERATION INSTRUCTIONS FOR PEDESTAL SUMP PUMPS

Models:

**PF92333, PF92301,
PF92553, PF92551**



Carefully read and understand all of the Warnings and installation instructions in this manual. Failure to follow these instructions could lead to serious bodily injury and/or property damage. Retain these instructions for future reference.

This pump has been manufactured with your needs in mind. Properly installed in the right application, your new PROFLO Pump will give you years of carefree performance.

DANGER ⚠ This pump motor is not submersible. Do not submerge the motor or allow motor to be exposed to water. Personal injury and/or death from electrical shock could result.

DANGER ⚠ Water and electricity can be dangerous if certain precautions are not adhered to. This pump is designed to operate perfectly safe in a water environment; however, improper use and installation can result in personal harm from electrical shock. Please pay attention to the following warnings.

WARNING ⚠ Never touch any electrical device, including this pump, when it is touching water, in water, or even in a moist environment. Always unplug (disconnect the electricity) when servicing or installing the unit.

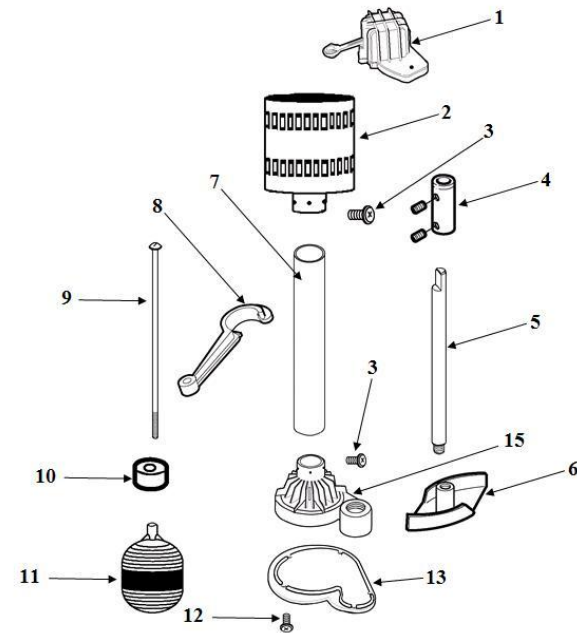
WARNING ⚠ **RISK OF ELECTRICAL SHOCK.** This pump is supplied with a grounding conductor and grounding-type attachment plug. To reduce the risk of electrical shock, be certain that it is connected only to a properly grounded, grounding-type receptacle.

WARNING ⚠ Do not use the power cord or discharge hose to carry or handle the pump. Doing so may cause damage to the power cord or discharge hose.

WARNING ⚠ Always use a grounded outlet to attach the plug. A three-prong mating type receptacle is needed for safe use. This should be in accordance with the National Electric Code and any additional codes or laws required by your local government.

NOTICE ⚠ It is strongly recommended to use a ground fault interrupt (GFCI) device on any electrical appliance, including this pump, when used in a wet or moist environment. This is required by many local codes and enforcement agencies.

REPLACEMENT PARTS



Ref #	Description	PART # FOR MODEL:			
		PF92333	PF92301	PF92553	PF92551
1	Switch	PF99100	PF99100	PF99100	PF99100
2	Motor	YYB-200	YYB-200	YYB-300	YYB-300
3	Screw (Qty 3)	PF99110	PF99110	PF99110	PF99110
4	Coupling	PF99112	PF99112	PF99112	PF99112
5	Drive Shaft	PF99113	PF99114	PF99113	PF99114
6	Impeller	PF99116	PF99118	PF99116	PF99118
7	Column	PF99119	PF99120	PF99119	PF99124
8	Float Rod Guide	PF99126	PF99128	PF99126	PF99128
9	Float Rod	PF99129	PF99131	PF99129	PF99131
10	Grommet	PF99130	PF99130	PF99130	PF99130
11	Float Ball	PF99132	PF99134	PF99132	PF99134
12	Screw (Qty 6)	PF99136	PF99137	PF99136	PF99137
13	Base (Volute)	PF99140	PF99142	PF99140	PF99142
14	Gasket	N/A	PF99138	N/A	PF99138
15	Base (Housing)	PF99146	PF99148	PF99146	PF99148

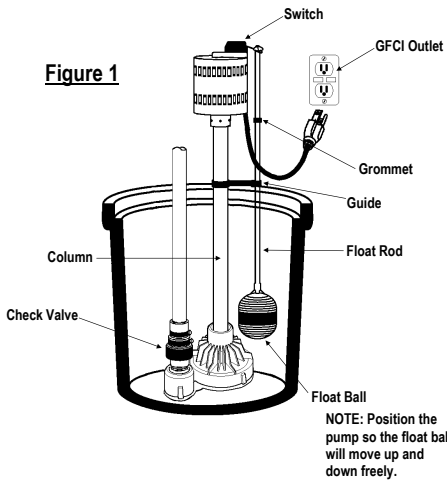
NOTICE ⚠️ A qualified electrician must perform all wiring.

INSTALLATION (New Pump)

1.
 - a. Insert the float rod through the hole in the switch.
 - b. Carefully slide the rubber grommet onto the float rod.
 - c. Slide guide onto the float rod and attach it to the column.

NOTE: On Model #'s PF92333 & PF92553 there is a hole in the column where the float rod guide “snaps” into. Make sure that the float rod guide is properly secured to the column to prevent the float rod from moving.

 - d. Thread the float ball onto the float rod. You may need a set of pliers to prevent the rod from turning.
 - e. Move the grommet up or down on the float rod to adjust the “turn on” position of the pump.
2. Set your new pump in the bottom of the sump basin. The pump should be placed on a solid foundation. Do not place pump directly on the ground or sandy or rocky surfaces. Sand and small stones may clog or cause damage to your pump.
3. Make sure the float ball will move up and down freely without coming in contact with the side of the sump pit. Contact with the side of the sump pit may cause the switch to malfunction. See figure 1 below.



4. It is highly recommended to install a full flow, swing type check valve (not included) as close to the discharge outlet on the pump as possible. A new check valve will greatly increase the life of your pump, and should be the same size as the pump discharge, 1 ¼” or 1 ½”.

5. Connect the pump and check valve together using schedule 40 PVC pipe and fittings. You can also use DWV or ABS pipe, as this is not a pressure installation. Corrugated drain hose is intended for temporary use and should not be used in a permanent installation.
6. Test your installation after you have completed setting up the pump and connected all piping. Plug the cord into the grounded outlet. The pump should not run at this point. If the pump runs, the switch is stuck in the upright position. Fill the sump basin with water using buckets or a hose. When the float moves to the upright position, the pump will turn on. The switch will turn off the pump when the float reaches the down position. You may adjust the “turn on” position to meet your particular needs by moving the grommet up or down on the float rod. Remember the switch must move up and down freely without touching the sides of the sump basin.

TROUBLESHOOTING		
PROBLEM	POSSIBLE CAUSES	HOW TO CORRECT
If the pump does not start or run	▪ Pump is not plugged in, switch or breaker is off	▪ Plug pump in or turn on switch/breaker
	▪ Check for blown fuses or tripped circuit breakers or tripped GFCI outlets	▪ Replace fuse, reset breaker, reset GFCI outlet
	▪ Switch is defective	▪ Check and replace if necessary
	▪ Motor thermal protector tripped	▪ Allow pump to cool. Pump will reset
The pump starts and stops too often	▪ Backflow of water from discharge hose/pipe	▪ Install or replace check valve
	▪ Switch is defective	▪ Replace switch
If the pump runs but moves little or no water	▪ Clogged intake screen	▪ Clean or replace screen
	▪ Clogged discharge hose/pipe	▪ Remove clog
	▪ Frozen discharge hose/pipe	▪ Allow hose/pipe to thaw
	▪ Low line voltage	▪ Check wire size and increase if necessary
	▪ Check valve is stuck in the closed position	▪ Inspect, repair or replace if necessary
	▪ Check valve is installed backwards	▪ Make sure valve is installed in the correct direction of flow
	▪ Worn, damaged or clogged pump parts	▪ Inspect for wear, damage or clog and clean or replace if necessary
▪ Discharge head exceeds pump capacity	▪ If pumping height is over 22', the pump will not move water. See performance chart	
Pump does not shut off	▪ Float ball is obstructed or stuck	▪ Remove obstruction
	▪ Defective Switch	▪ Replace switch