

Product information presented here reflects conditions at time of publication. Consult factory regarding discrepancies or inconsistencies.



**PUMP COMPANY**

*Zoeller Family of Water Solutions™*

**MAIL TO:** P.O. BOX 16347 • Louisville, KY 40256-0347  
**SHIP TO:** 3649 Cane Run Road • Louisville, KY 40211-1961  
(502) 778-2731 • 1 (800) 928-PUMP • FAX (502) 774-3624

**visit our web site:**  
**[www.zoeller.com](http://www.zoeller.com)**

## COMPARE THESE FEATURES

- Durable cast construction. ASTM Class 25 cast iron, motor housing cover, and pump housing
- Engineered plastic base on 270
- Not affected by materials normally found in drainage and sewage sumps
- Stainless steel screws, bolts, and handle
- 20 ft. UL listed 3-wire neoprene cord and plug
- Motor - 1 HP, 60 Hz, 3450 RPM, oil-filled, hermetically sealed, automatic reset thermal overload protected
- Square ring & gasket - neoprene
- Carbon and ceramic shaft seal
- Double seal pump available - 4270 Series
- Cast iron base on 4270
- Upper sleeve bearing and lower ball bearing running in a bath of oil
- Passes 2" spherical solids
- 2" NPT Discharge
- Corrosion-resistant powder coated epoxy finish

**Note:** The sizing of effluent systems normally requires variable level float(s) controls and properly sized basins to achieve required pumping cycles or dosing timers with nonautomatic pumps.

**SIMPLEX AND  
DUPLEX SYSTEMS  
AVAILABLE**

**PACKAGED  
SYSTEMS  
AVAILABLE**

### FEATURES AVAILABLE

- Double Seal Pump in 4270, 115 or 230V, 1Ph, 1HP
- 2" NPT Discharge
- Passes 2" Spherical Solids
- BN and BE pumps available packaged with a Piggyback Variable Level Float Switch

**ALL MODELS ARE COMPLETELY  
SUBMERSIBLE, HERMETICALLY SEALED  
Watertight - dust tight**

\* May be used in those states where codes do not restrict solids size in effluent systems.

## 270-4270 Series

(For Pump Prefix Identification see News & Views 0052)

# "WASTE-MATE"

SUBMERSIBLE

## SEWAGE/\*EFFLUENT PUMP OR DEWATERING PUMP 2" NPT DISCHARGE

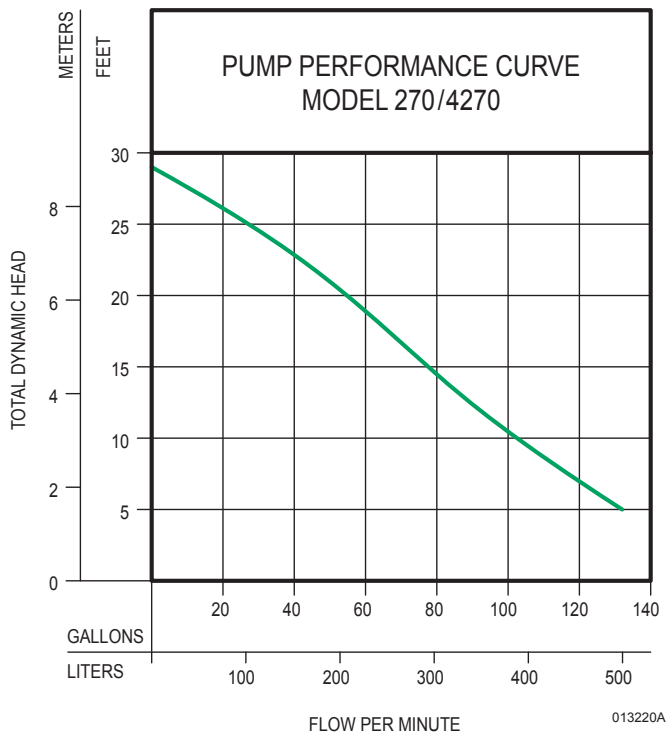


Nonautomatic  
"270"

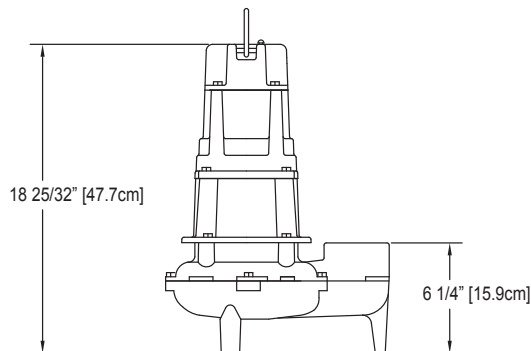


Nonautomatic  
"4270"  
double seal pump





### DOUBLE SEAL MODEL

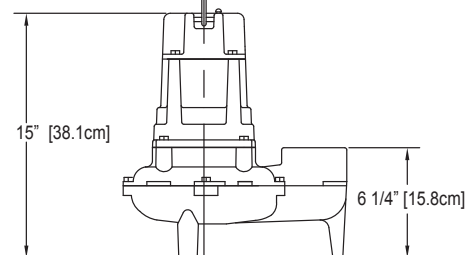
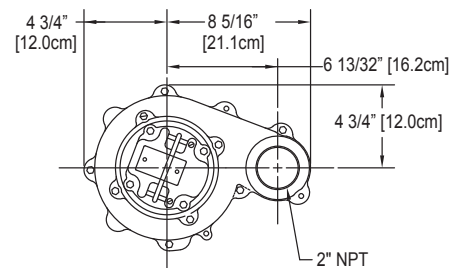


### TOTAL DYNAMIC HEAD/FLOW PER MINUTE SEWAGE AND DEWATERING

MODEL		270/4270	
Feet	Meters	Gal.	Liters
5	1.5	132	500
10	3.0	101	382
15	4.6	77	291
20	6.1	56	212
25	7.6	29	110
Shut-off Head:		29 ft. (8.8m)	

013220B

### SINGLE SEAL MODEL



SK1532

### CONSULT FACTORY FOR SPECIAL APPLICATIONS

270/4270 MODELS					Control Selection		
Model	Model	Volts-Ph	Mode	Amps	Simplex	Duplex	
N270	N4270	115 1	Non	15.0	1 or 2	3	
E270	E4270	230 1	Non	7.5	1 or 2	3	

- Electrical alternators for duplex systems available with variable level control switches.
- Minimum recommended basin size (Small load applications)  
Simplex - 18" x 30" - Duplex - 30" x 30"

#### Standard All Models -

- 270 - Weight 49 lbs. 1 HP
- 4270 - Weight 73 lbs. 1 HP
- High water alarms available
- Mechanical alternators available for duplex systems

**CAUTION:** Maximum temperature of sewage or dewatering must be limited to 130°F (54°C). For over 130°F (54°C) special quotation required.

### SELECTION GUIDE

- For automatic use single piggyback variable level float switch or double piggyback variable level float switch. Refer to FM0477.
- See FM1228 for correct model of simplex control panel.
- See FM0712 for correct model of duplex control panel.

For information on additional Zoeller products refer to catalog on Simplex Panels, FM1596; Piggyback Variable Level Switches, FM0477; Electrical Alternator, FM0486; Mechanical Alternator, FM0495; Sump/Sewage Basins, FM0487; Single Phase Alarm Systems, FM0732; Watertight Junction Boxes, FM1597; and Disconnect & Rail Systems, FM0787.

#### CAUTION

All installation of controls, protection devices and wiring should be done by a qualified licensed electrician. All electrical and safety codes should be followed including the most recent National Electric Code (NEC) and the Occupational Safety and Health Act (OSHA).

### RESERVE POWERED DESIGN

For unusual conditions a reserve safety factor is engineered into the design of every Zoeller pump.

© Copyright 2014 Zoeller Co. All rights reserved.