

Ion[®] Switch

Digital Level Control

Patent No. 8,591,198



Digital piggyback style switch for stationary pump control in sump and sewage applications.



Solid state sensing activates pump when water level in sump/ejector pit reaches preset height.



Stationary switch operates without moving parts or contact points to either wear or fail. Enhances control to help extend pump life.



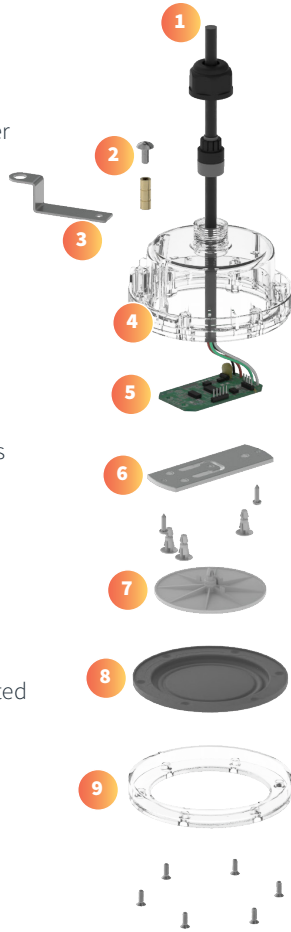
Can be used with any 115 volt pump up to 15 amps. Inverter rated for use with most battery backup pump systems.



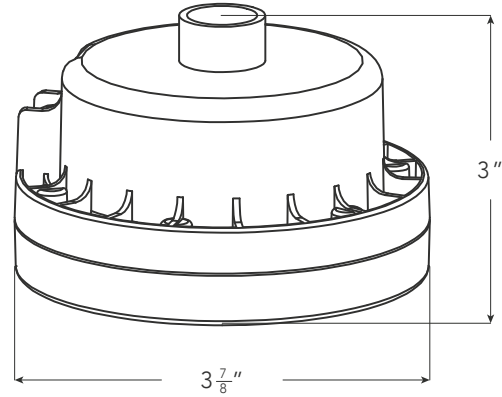
Leak-resistant enclosure with superior sealing enhances durability and prolongs service.

Assembly View

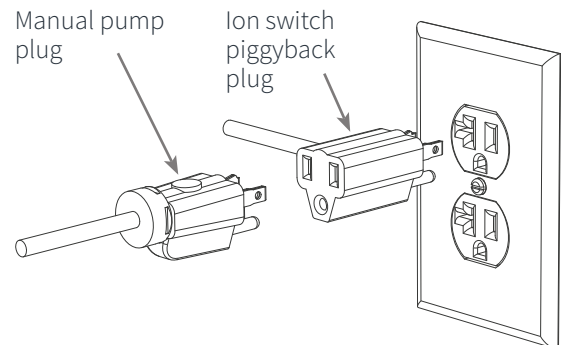
1. Cord strain relief follower
2. Mounting arm screw
3. Switch mounting arm
4. Top housing
5. Control and logic boards
6. Strain gauge
7. Pressure plate
8. Diaphragm with integrated o-ring gasket
9. Bottom Housing



Switch Dimensions



Piggyback Plug Illustration



System Specifications

- **Type of Application:** Sump and sewage
- **Voltage:** 115 volt
- **Amp Rating:** 12 FLA, 15 amp max
- **Power Cord:** 10' or 20'
- **Pump Range:** 6"
- **3 year warranty**
- **Part Number:** iN-006-010-10PA-B