

NEW!

Liberty Pumps® StormCell®

442-Series Battery Back-Up Pumps

Dual 12 volt
Battery Box
Shown



Patent: See
www.libertypumps.com/patents

Liberty's StormCell® battery back-up pumps provide uninterrupted flood control for your basement in the event of a power outage or main pump failure. These highly advanced 12 volt backup pump systems are available as standard models or with optional NightEye® wireless technology. With NightEye® enabled models, you have one of the most advanced pump systems on the market - providing intelligent monitoring via the NightEye® app and real time notifications via text message, email or push notification




NightEye®
Wireless Enabled
Model Available



Away from home? Power outage? Liberty has you covered.

442-10A Series Standard System 10 AMP Single Battery

FEATURES:

- Energy efficient 12V DC Pump (Manufactured in the USA by Liberty Pumps)
- Professional-grade 10 amp charger/controller
- Suitable with Wet Cell, AGM or gel-type batteries
- Microprocessor with energy efficient Switch Mode Technology
- Single battery box accommodates Group 27 or 31 batteries
- Remote wall-mount user interface with LCD display
- Audio alarm (features a self-reset after silence)
- Super-bright red LED alarm ring
- 9-volt battery backup – operates alarm in standby mode for up to 72 hours
- Alarm and pump test buttons
- Green LED AC power light and audible notification of power lost
- Blue LED Pump-Run light
- Auxiliary contacts (24VDC, 100 mA max.)
- Compact “snap-on” activation float with integral alarm float (fits 1-1/4" and 1-1/2" pipe)
- High water float acts as a redundant “on” float for the pump
- Tee and fittings for standard installations

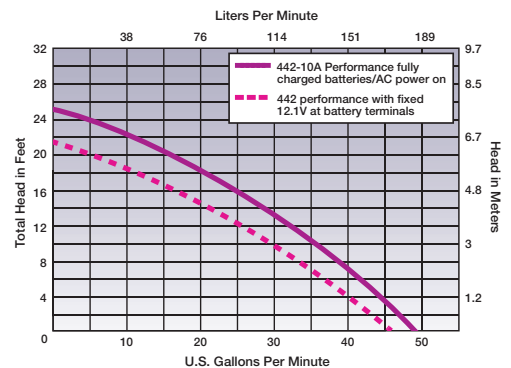
442-25A Series High-output System 25 AMP Dual Battery

FEATURES:

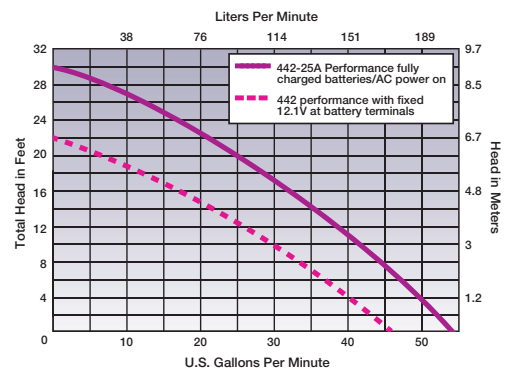
- Energy efficient 12V DC Pump (Manufactured in the USA by Liberty Pumps)
- Heavy-duty fan cooled 25 amp charger. (Can run as a continuous power supply for the backup pump in the event of a main pump failure)
- Suitable with Wet Cell, AGM or gel-type batteries
- Dual battery box accommodates (2) Group 27 or 31 batteries
- Microprocessor controlled with energy efficient Switch Mode Technology
- Remote wall-mount user interface with LCD display
- Audio alarm (features a self-reset after silence)
- Super-bright red LED alarm ring
- 9-volt battery backup – operates alarm in standby mode for up to 72 hours
- Alarm and pump test buttons
- Green LED AC power light and audible notification of power lost
- Blue LED Pump-Run light
- Auxiliary contacts (24VDC, 100 mA max.)
- Compact “snap-on” activation float with integral alarm float (fits 1-1/4" and 1-1/2" pipe)
- High water float acts as a redundant “on” float for the pump
- Tee and fittings for standard installations



442-10A Series Performance



442-25A Series Performance



For optimum performance, Liberty StormCell® batteries recommended

Liberty Pumps



NightEye®



Apple® iOS & Android® compatible

FREE App!



GET IT ON
Google Play



Available on the
App Store

Wireless Enabled

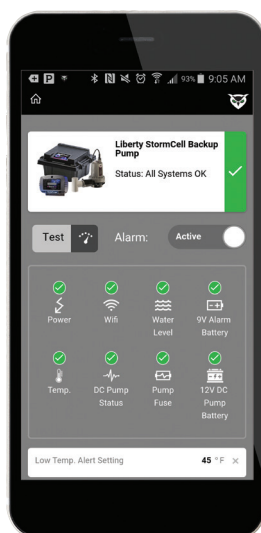
Both the 10 amp and 25 amp systems are available with optional wireless enabled technology. The NightEye® cloud-based system provides constant monitoring of your backup pump – providing you instant information to your smart device - anywhere in the world.

Notifications:

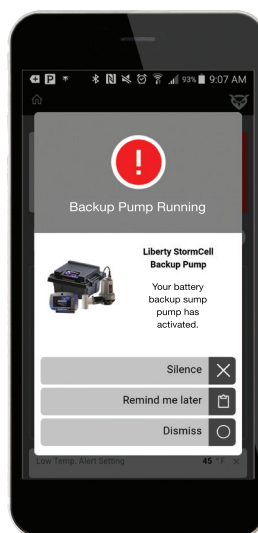
- Backup pump activation
- High water level alarm
- AC power lost
- Wi-Fi connection lost (system utilizes a smart wireless connection monitor to prevent nuisance notifications)
- Blown fuse or DC pump failure
- 12-volt battery charge levels
- Critically low battery warning
- Basement temperature level warning (user sets temperature warning level)

Other Features:

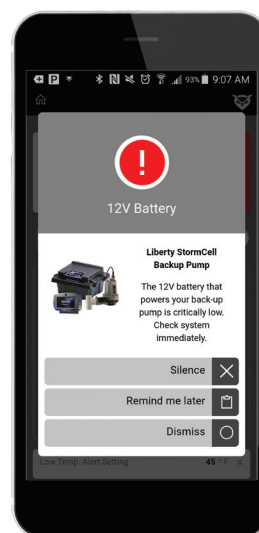
- No subscription or user fees (message and data rates may apply)
- System works through your home's wireless router
- Simple and easy connection using BlinkUp™ technology.
- 9-volt battery backup on control device will operate for up to 12 hours in active alarm mode and 7 days in standby mode
- Silence or test alarm remotely from your smart device



Normal Status



Back-Up Pump Running



Low Battery Level



Patent: See
www.libertypumps.com/patents

New!
Super-bright
LED alarm ring



Liberty Pumps®

StormCell®

All System Include:

- Backup Pump
- Battery Case
- Activation Switch
- Control Panel/Alarm
- Charger Unit
- Check Valve
- Plumbing and mounting components
- AC Power Supply

Choose between wireless enabled or standard models

NightEye® WIRELESS ENABLED MODELS



442-10A-EYE



442-25A-EYE

STANDARD MODELS



442-10A



442-25A

Max Flow (GPM)	@ 12.1V	46	46	46	46
	with AC Power On	49	54	49	54
Flow at 10' (GPM)	@ 12.1V	30	30	30	30
	with AC Power On	35	42	35	42
Continuous Run Times* (with StormCell® Group 31 Wet Cell batteries)		5.5 Hours (~8,000 gallons)	11 Hours (~16,000 gallons)	5.5 Hours (~8,000 gallons)	11 Hours (~16,000 gallons)
Cycling Run Times** (with StormCell® Group 31 Wet Cell batteries)		8 Days	16 Days	8 Days	16 Days
Run Times/Gallons (AC Power On)		Unlimited (performance will decline as battery discharges)	Unlimited at Rated Curve (25A Charger supports continuous run)	Unlimited (performance will decline as battery discharges)	Unlimited at Rated Curve (25A Charger supports continuous run)
Max Lift (Feet)	@ 12.1V	21.5'	21.5'	21.5'	21.5'
	with AC Power On	25'	30'	25'	30'
User Interface with LCD Display		✓	✓	✓	✓
NightEye® Wireless Enabled		✓	✓		
High-output Dual Battery System (Batteries sold separately)			✓		✓
Weight (lbs)		20	30	20	30

* Continuous run at 10' lift. **Based on 10' lift and pumping 10 gallons per cycle - 4 times an hour.

Certifications

Pumps:



Charger:



Alarm and Interface:



Liberty Pumps • 7000 Apple Tree Avenue • Bergen, New York 14416 • Phone 800-543-2550 • Fax (585) 494-1839

libertypumps.com