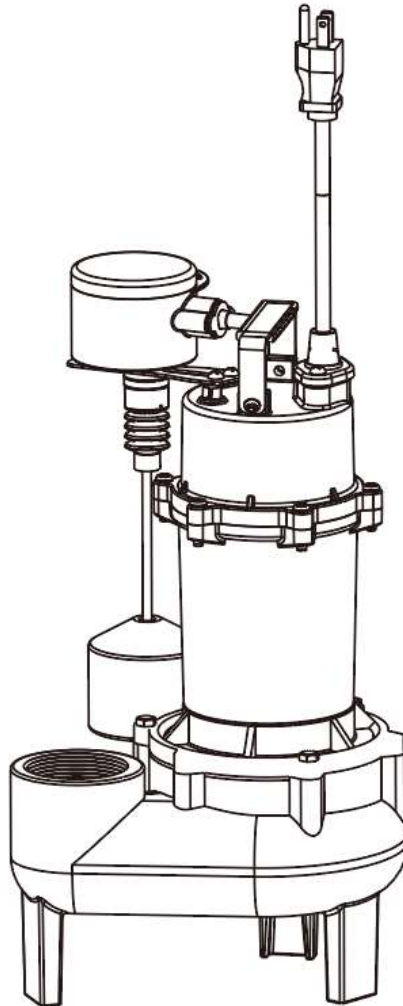




Westinghouse

OWNER'S MANUAL

SEWAGE PUMP



Model# WH50SP

PERFORMANCE

SKU	HP	GPH of Water @ Total Feet Of Lift				Max. Lift
		0 ft.	5 ft.	10 ft.	15 ft.	
WH50SP	1/2	6500	5000	4200	2400	18 ft.

SAFETY INSTRUCTION

1. Do not pump flammable or explosive liquids such as oil, gasoline, kerosene, ethanol, etc. Do not use in the presence of flammable or explosive vapors. Using this pump with or near flammable liquids can cause an explosion or fire, resulting in property damage, serious personal injury, and/or death.
2. ALWAYS disconnect the power to the pump before servicing.
3. Do not touch the motor housing during operation. The motor is designed to operate at high temperatures. Do not disassemble the motor housing.
4. Do not handle the pump or pump motor with wet hands or when standing on a wet or damp surface, or in water.
5. Extension cords may not deliver sufficient voltage to the pump motor. Extension cords present a life threatening safety hazard if the insulation becomes damaged or the connection ends fall into water. The use of an extension cord to power this pump is not permitted.
6. Secure the discharge line before starting the pump. An unsecured discharge line will whip, possibly causing personal injury, and/or property damage.
7. Release all pressure and drain all water from the system before servicing any component.
8. Wear safety goggles at all times when working with pumps.
9. This unit is designed only for use on 115 volts (single phase), 60 Hz, and is equipped with an approved 3-conductor cord and 3-prong grounded plug. Do not remove the ground pin under any circumstances. The 3-prong plug must be directly inserted into a properly installed and grounded 3-prong, grounding-type receptacle. Do not use this pump with a 2-prong wall outlet. Replace the 2-prong outlet with a properly grounded 3-prong receptacle (a GFCI outlet) installed in accordance with the National Electrical Code and local codes and ordinances. All wiring should be performed by a qualified electrician.
10. Protect the electrical cord from sharp objects, hot surfaces, oil, and chemicals. Avoid kinking the cord. Do not use damaged or worn cords.
11. Failure to comply with the instruction and designed operation of this unit may void the warranty. ATTEMPTING TO USE A DAMAGED PUMP can result in property damage, serious personal injury, and/or death.
12. Ensure that the electrical circuit to the pump is protected by a 15Amp, fuse or circuit breaker.
13. Do not lift the pump by the power cord.
14. Know the pump and its applications, limitations, and potential hazards.
15. Secure the pump to a solid base. This will aid in keeping the pump in a vertical orientation. This is critical in keeping the pump operating at maximum efficiency. It will also help prevent the pump from clogging resulting in premature failure.
16. Periodically inspect the pump and system components to ensure the pump suction screen is free of mud, sand, and debris. Disconnect the pump from the power supply before inspecting.
17. Follow all local electrical and safety codes, along with the National Electrical Code (NEC). In addition, all Occupational Safety and Health Administration (OSHA) guidelines must be followed.
18. The motor of this pump has a thermal protector that will trip if the motor becomes too hot. The protector will reset itself once the motor cools down and an acceptable temperature has been reached. The pump may start unexpectedly if it is plugged in.
19. Ensure the electrical power source is adequate for the requirements of the pump.

20. This pump is made of high-strength, corrosion-resistant materials. It will provide trouble-free service for a long time when properly installed, maintained, and used. However, inadequate electrical power to the pump, dirt, or debris may cause the pump to fail. Please carefully read the manual and follow the instructions regarding common pump problems and remedies.

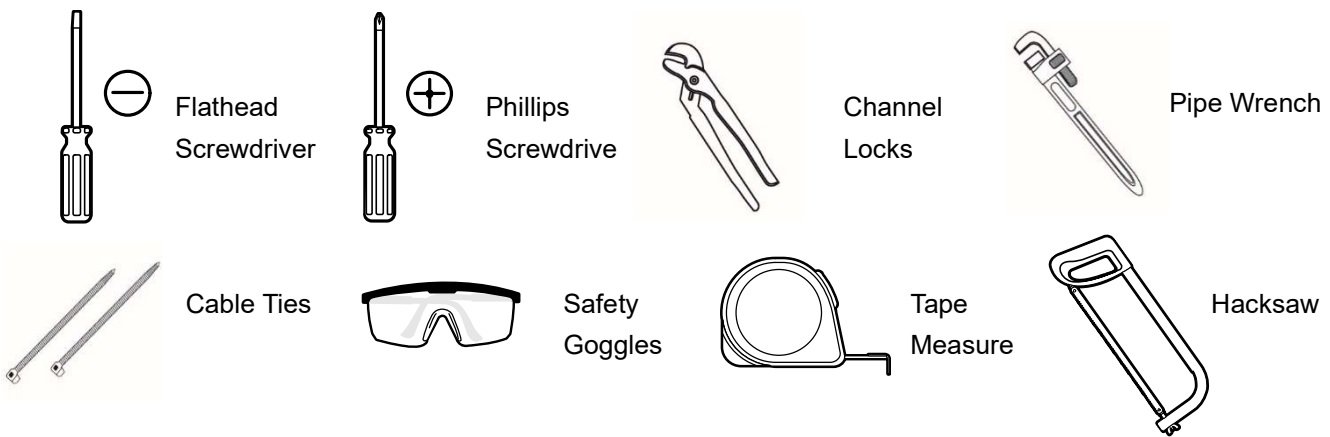
PRE-INSTALLATION

APPLICATION

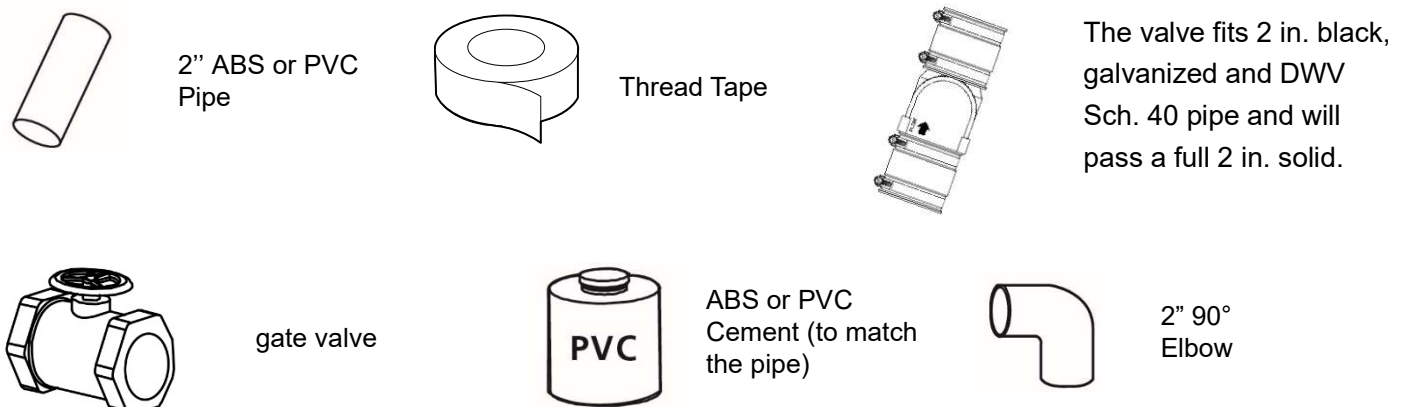
Submersible effluent & sewage pumps are designed for pumping sewage, effluent, wastewater or flooded water with up to 2 in. solids.

The pump is built with overload thermal protections and auto reset. The pump is equipped with a 10' 3-prong grounding-type power cord and piggyback-style switch for automatic or manual operation. Ball bearings on motor shafts never need lubrication.

TOOLS REQUIRED



MATERIALS REQUIRED (NOT INCLUDED)

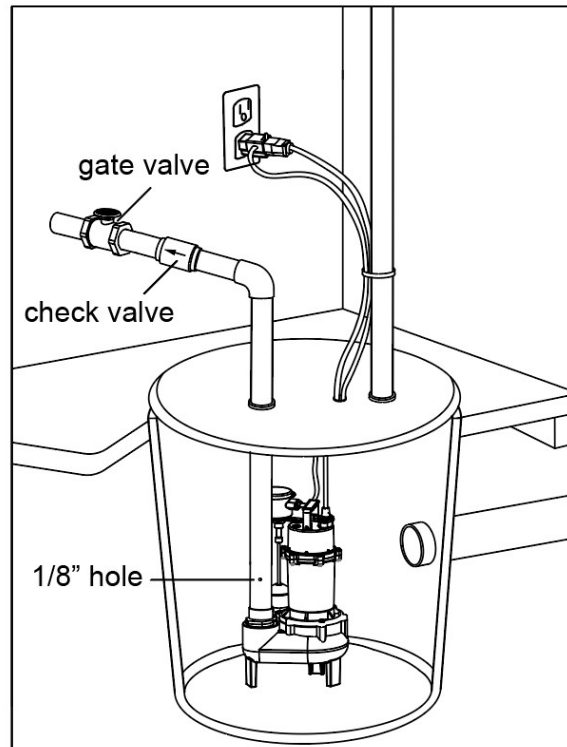


SPECIFICATIONS

Power supply	115V, 60 HZ., 15 Amp Circuit
Liquid temp. range	32-131°F (0-55°C)
Discharge size	2" FNPT
Sump basin	Minimum 14 in. (355 mm) diameter, 18 in. (457 mm) depth

NOTICE: Read this Owner's Manual for installation, operation, and safety information.

INSTALLATION



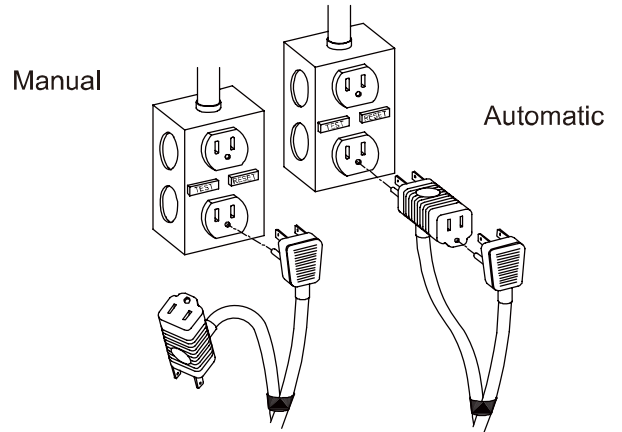
1. Install the pump on a solid, level foundation, or in a sump pit constructed of tile, concrete, steel, or plastic. The recommended minimum diameter of the sump pit is 14" (35.5 cm) diameter and the minimum recommended depth is 18" (45.7 cm). Check local codes for approved materials.
NOTICE: Pump should not be installed on clay, earth, or sand surfaces.
2. Clean the area around the pump of small stones and gravel which could clog the pump. Keep the pump inlet screen clear.
3. Secure the pump on a level, solid base. Do not suspend the pump by the discharge pipe, hose, or power cord.
4. Install 2" discharge pipe into the 2" NPT discharge port. Use rigid plastic pipe and wrap threads with Teflon tape, **NOT pipe joint compound**. Screw pipe into pump hand tight plus 1-1/2 turns.
5. To reduce motor noise and vibrations, a short length of rubber hose can be connected into discharge line near pump using suitable clamps.
6. If the pump discharge line is exposed to outside subfreezing atmosphere, then the portion of line exposed must be installed so any water remaining in pipe will drain to outfall by gravity. Failure to do this can cause water trapped in discharge to freeze which could result in damage to pump.
7. Install a check valve in the vertical pipe to prevent flow backwards through the pump when it shuts off. Make certain the flow indicating arrow points away from the pump. This check valve will keep the water from either running back into the basin or into the area being pumped out when the pump is not running. Check valve should be a free flow valve that will easily pass solids.

8. Drill a 1/8" (3.1 mm) hole in discharge pipe about 1"-2" (2.5 - 5.1 cm) above pump discharge connection to prevent air-locking the pump.
9. Power Supply: Pump is designed for 120 V, 60 Hz, operation and requires a minimum 15 amp individual branch circuit.
10. Plug the pump power cord plug into the piggyback switch plug outlet, and then plug the switch plug into a 120V GFCI power outlet for automatic operation. The pump will start operating if the float switch moves over the pump top. The water will be pumped out. When the water lowers to certain level, the float switch will turn off the pump. Or plug the pump power cord plug into a 120V GFCI power outlet directly for manual operation. Pump will start operating immediately once plugged into the GFCI and drain water out, when the water moves out, you must unplug the pump immediately.

The following picture shows a typical connection for pumps with the piggy-back plug, for manual and automatic operations.

Automatic - Plug float cord into GFCI outlet, then plug pump cord into float cord.

Manual - Plug pump cord directly into GFI outlet.



11. After the installation of the necessary plumbing, check valve, and rubber hose, follow the glue manufacturer's instructions for safety precautions and curing time. The pump is ready for operation.
12. Check the pump by filling the sump pit with water and observe the pump's operation through one complete cycle. Make sure the pump cannot move in the sump pit and float switch moves freely up and down.
CAUTION: Risk of flooding. Can cause personal injury and/or property damage. Failure to make this operational check may lead to improper operation, premature failure, and flooding.

OPERATION

WARNING: Do not handle this pump or plug in or unplug this pump with wet hands or while standing in water, unless you are certain all power has been turned off to the pump. Remember, the pump should be connected only to a properly grounded, GFCI outlet.

1. Make certain the pump is submerged in water. Running the pump dry can damage the shaft seal.
2. Plug the pump power cord plug into the back of the float switch cord's plug. Plug the float switch cord plug into a 115V GFCI power outlet.
3. After connecting power to the pump, test the pump:
 - a. Fill the basin to above the float switch operation ON Height. The pump should start pumping.
 - b. The pump should pump the water down to below its float switch operation OFF Height and then stop pumping.
 - c. If the water drains back into the basin and restarts the pump, make sure the check valve is properly installed and working. Also make sure that all pipe connections are tight.
4. The motor is equipped with an automatically resetting thermal overload protector. If the motor gets too hot, the overload protector will shut off the pump before it is damaged. When the motor has cooled sufficiently, the overload protector will reset, and the motor will restart.

NOTICE: If the overload protector stops the pump repeatedly, disconnect the power from the pump and check to find the problem. Low voltage, a long extension cord, clogged impeller, screen blocked by debris, or water that is too hot can cause motor overheating.

CARE AND CLEANING

CAUTION: Always use the handle to lift the pump. Never use the power cord to lift the pump. To avoid skin burns, unplug the pump and allow time for it to cool after periods of extended use.

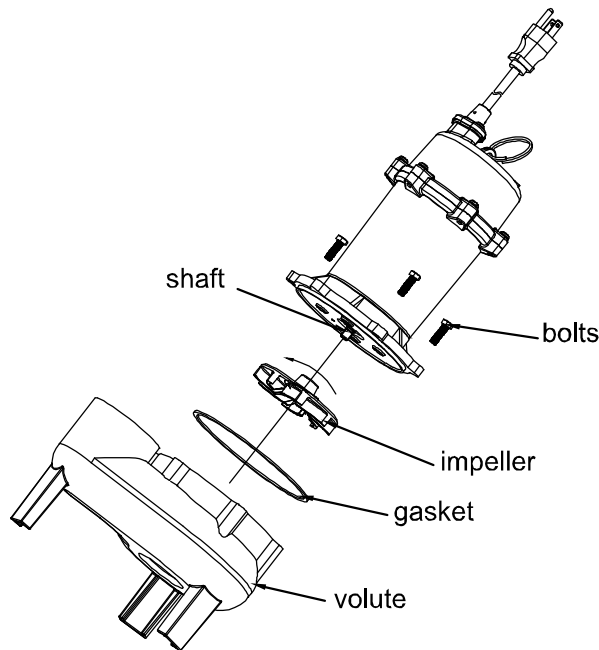
Do

- When the power is disconnected, inspect the pump suction screen and remove all debris, then plug the pump back into the grounded (GFCI) outlet.

Do Not

- Do not disassemble the motor housing. This motor has NO repairable internal parts, and disassembly may cause leakage or dangerous electrical wiring issues.
- Do not lift up the pump by the power cord.

- Before removing pump from basin for service, always disconnect electrical power to pump and control switch.
- Submerge pump in a disinfectant solution (bleach) for at least one hour before disassembling pump.
- Unscrew the bolts, and remove the volute/gasket.
- Use a flathead screwdriver to hold the shaft, then turn the impeller counter clockwise to release the impeller.
- Remove debris from around the shaft and on/under the impeller.
- Reassemble the pump.



TROUBLESHOOTING

Do not disassemble the motor housing. This motor has NO repairable internal parts, and disassembly may cause an oil leak or dangerous electrical wiring issues. DO NOT lift up the pump by power cord.

Problem	Solution
The pump fails to operate.	<ol style="list-style-type: none">1. Check to be sure that the power cord is securely plugged into an outlet.2. Check to be sure you have electrical power.3. Check that liquid fluid levels are high enough to activate the switch.4. Check to be sure that a 1/8 in. (3.2mm) vent hole in the discharge pipe is not plugged.5. Check for blockage in the pump inlet, impeller, check valve or discharge pipe.6. Thermal overload may have tripped. Disconnect from the power source for 30 minutes to allow the motor to cool, then reconnect to the power source. Check for cause of overheating/overloading.
The pump fails to empty sump.	<ol style="list-style-type: none">1. Be sure all valves in the discharge are fully open.2. Clean out the discharge pipe and check valves.3. Check for blockage in the pump inlet or impeller.
The pump will not shut off.	<ol style="list-style-type: none">1. Check the switch floats for proper operation and location.2. If the pump is completely inoperative or continues to malfunction, call customer service.

WARRANTY

WESTINGHOUSE RESIDENTIAL PUMPS

LIMITED PUMP WARRANTY

LIMITED WARRANTY

Westinghouse Residential Pumps warrants the products covered by this Limited Warranty to be free from defects in material or workmanship for the periods set forth below.

- 1/2 HP Sewage Pump (WH50SP 860010653692) – 3 years from date of purchase

Subject in all respects to the terms and conditions set forth in this Limited Warranty, during the applicable warranty period, Westinghouse Residential Pumps will repair or replace to the original consumer any portion of the subject product which proves defective due to defective materials or workmanship.

The determination of whether to repair or replace defective product or components shall be in the sole and absolute discretion of Westinghouse Residential Pumps. Westinghouse Residential Pumps may elect to inspect any product claimed to be defective under this limited warranty to confirm applicability of this limited warranty.

THIS WARRANTY SETS FORTH WESTINGHOUSE RESIDENTIAL PUMPS SOLE OBLIGATION AND CONSUMER'S EXCLUSIVE REMEDY FOR DEFECTIVE PRODUCT.

GENERAL TERMS AND CONDITIONS; WARRANTY EXCLUSIONS

This Limited Warranty shall not apply to damage due to acts of God, normal wear and tear, normal maintenance services and the parts used in connection with such service, damages caused by lightning strikes or other acts of nature, power surges or conditions beyond the control of Westinghouse Residential Pumps. This Limited Warranty shall not apply to products which, in the sole judgment of Westinghouse Residential Pumps, have been subject to negligence, abuse, accident, misuse, tampering, alteration, improper installation, operation, maintenance or storage.

This Limited Warranty will be VOIDED if any of the following conditions are found to have occurred:

- Commercial or industrial use of the product.
- The product is not installed in accordance with applicable codes, ordinances, and good trade practices.
- The product is not operated or maintained in accordance with the printed instructions provided.
- The product is used for purposes other than those for which it was designed and manufactured.
- The product is connected to voltage other than indicated on nameplate or labels.
- The product is exposed to abrasive or corrosive substances including but not limited sand, gravel, cement, grease, plaster, mud, tar, oil, gasoline, solvents.
- The product has been used for pumping liquids below 32°F or above 95°F.
- The product has been allowed to operate dry (liquid supply cut off).

Westinghouse Residential Pumps shall NOT be responsible or liable for the cost of field labor or other charges incurred by customer in removing or reinstalling any product, part, or component.

THIS LIMITED WARRANTY DOES NOT COVER REPLACEMENT PARTS FOR FAILURE DUE TO NORMAL WEAR AND TEAR. THIS LIMITED WARRANTY DOES NOT COVER THE COST OR VALUE OF DAMAGED PROPERTY, INCLUDING ANY PROPERTY AFFECTED BY WATER OVERFLOW, SEEPAGE OR FLOODING.

LIMITATIONS

Westinghouse Residential Pumps only obligation, and user's only remedy, shall be the replacement and/or repair by Westinghouse Residential Pumps of the product as described above. WESTINGHOUSE RESIDENTIAL PUMPS SHALL NOT BE LIABLE FOR ANY INJURY, LOSS OR DAMAGE, DIRECT, INCIDENTAL OR CONSEQUENTIAL (INCLUDING, BUT NOT LIMITED TO, INCIDENTAL OR CONSEQUENTIAL DAMAGES FOR LOST PROFITS, INJURY TO PERSON OR DAMAGE TO PROPERTY, OR ANY OTHER INCIDENTAL OR CONSEQUENTIAL LOSS), ARISING OUT OF THE USE OR THE INABILITY TO USE THE PRODUCT, AND THE USER AGREES THAT NO OTHER REMEDY SHALL BE AVAILABLE TO IT. Before using, the user shall determine the suitability of the product for user's intended use, and user assumes all risk and liability in connection therewith.

TO THE MAXIMUM EXTENT PERMITTED BY LAW, THE WARRANTY AND REMEDY DESCRIBED IN THIS LIMITED WARRANTY IS AN EXCLUSIVE WARRANTY AND REMEDY AND IS IN LIEU OF ALL OTHER WARRANTIES OR REMEDIES, ORAL, WRITTEN, STATUTORY, EXPRESSED OR IMPLIED, WHICH OTHER WARRANTIES AND REMEDIES ARE HEREBY EXPRESSLY EXCLUDED, INCLUDING BUT NOT LIMITED TO ANY IMPLIED WARRANTY OF MERCHANTABILITY OR FITNESS FOR A PARTICULAR PURPOSE, TO THE EXTENT EITHER APPLIES TO A PRODUCT SHALL BE LIMITED IN DURATION TO THE PERIODS OF THE EXPRESSED WARRANTIES GIVEN ABOVE. Any oral statements about the product made by Westinghouse Residential Pumps, its representatives, or any other parties do not constitute warranties and shall not be relied upon by the user.

NO AGREEMENT VARYING OR EXTENDING THE FOREGOING WARRANTY AND RELATED REMEDIES WILL BE BINDING UPON WESTINGHOUSE RESIDENTIAL PUMPS UNLESS IN WRITING, SIGNED BY A DULY AUTHORIZED OFFICER OF WESTINGHOUSE RESIDENTIAL PUMPS.

WESTINGHOUSE RESIDENTIAL PUMPS LIABILITIES IN CONNECTION WITH THE ORDER TO WHICH THIS LIMITED WARRANTY RELATES, WHETHER IN CONTRACT, IN TORT, UNDER ANY WARRANTY OR OTHERWISE, SHALL NOT EXCEED THE TOTAL PURCHASE PRICE OF THE PRODUCT.

Some jurisdictions do not allow limitations on how long an implied warranty may last and so the above limitation may not apply to you. The above limitation or exclusion of incidental or consequential damages may not apply to you if you are in a state that does not allow the limitation or exclusion of incidental or consequential damages.

If any term in this Limited Warranty is held to be illegal or unenforceable, the legality or enforceability of the remaining terms shall not be affected or impaired.

WARRANTY CLAIM SUBMISSIONS

All claim submissions under this Limited Warranty should be marked "WARRANTY CLAIM SUBMISSION" and must include a description of the defect, digital photos depicting the defect, and copies of documentation evidencing product purchase date (such as a sales receipt or invoice). WARRANTY CLAIMS MUST BE SUBMITTED WITHIN THIRTY (30) DAYS FROM THE PRODUCT'S DEFECTIVE PERFORMANCE. CLAIMS SUBMITTED AFTER SUCH THIRTY (30) DAY PERIOD WILL NOT BE ELIGIBLE FOR WARRANTY SERVICE.

WARRANTY CLAIMS MUST BE SENT TO:

Westinghouse Residential Pumps
4400 Easton Commons
Suite 250
Columbus, OH 43219
Phone: (833) 594-0444
Email: support@respumps.westinghouse.com